



WAREHOUSE MANAGEMENT SYSTEM

WMS Enhancement Summaries 079 - 083

- 1. BUILD 5.401.908.082/3 ENHANCEMENT 2
 - 1.1. *User Guides Online*..... 2
 - 1.2. *Proof of Delivery* 3
 - 1.3. *Licensing Control* 5
 - 1.4. *Fix Length Product ID*..... 5
 - 1.5. *Sales Orders Entry / Instructions*..... 5
- 2. BUILD 5.401.908.080/1 ENHANCEMENT 5
 - 2.1. *Sales Orders Packing* 5
 - 2.2. *Item Inventory Query*..... 6
- 3. BUILD 5.401.908.079 ENHANCEMENT 7
 - 3.1. *Transaction Codes Definition* 7

Note: This document is written based on the Enterprise version of CRISTAL Warehouse Management System. Some of the functionality described may not be available in the other versions.

1. BUILD 5.401.908.082/3 ENHANCEMENT

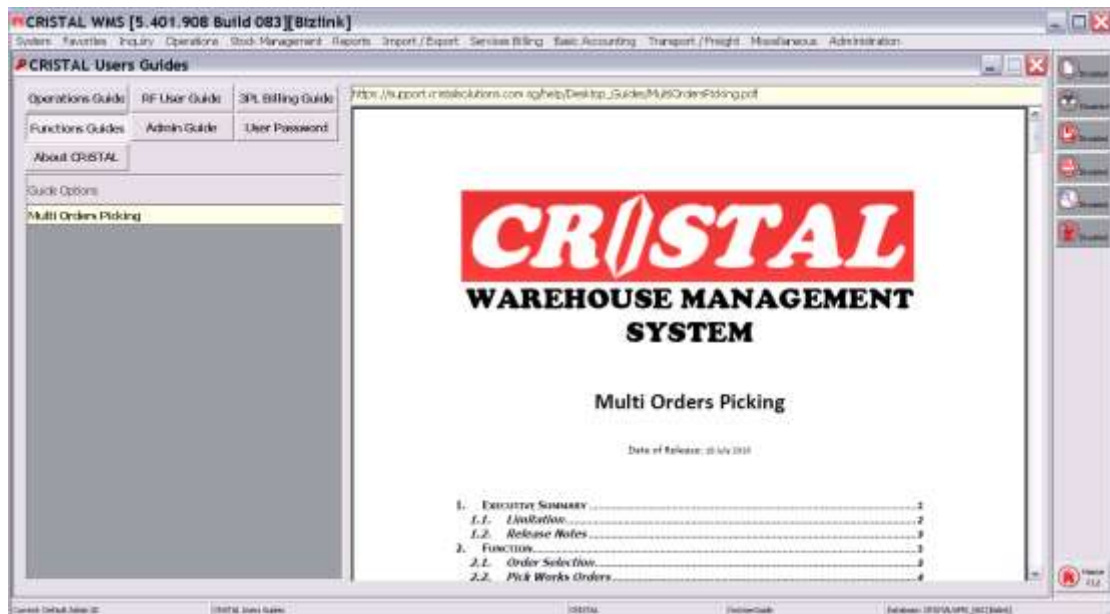
Following enhancement are incorporated in this build:

1.1. User Guides Online

This function is designed to enabled users to access to last updated users guides:

1. Operations User Guide
2. RF User Guides
3. 3PL Services Billing Guide
4. Functions Guides
5. Administrator Guides

To be able to access the user guides, it is mandatory that the station is connected to Internet and can access cristalsolutions.com.sg



Availability of guides are subjected to users' access and relevancy to the users.

For example, admin guides are available only users with access level of 40 and above.

RF user guides are available only if site have deployed RF devices by registering RF devices in the Devices Register.

Billing guide is enabled if sites is licensed for 3PL Services Billing.

Also integrate into the function are:

1. User Password Change and Choices
2. About...

Click on the required user guides Tabs and select the required guide.

The guide will be loaded into the web browser object as above.

Selecting User Password will display:



Please refer to operations user guide on function. Note that user must select section to be updated – Password or User Choice

About CRISTAL will display



This grid box display the configuration of the station and the system.

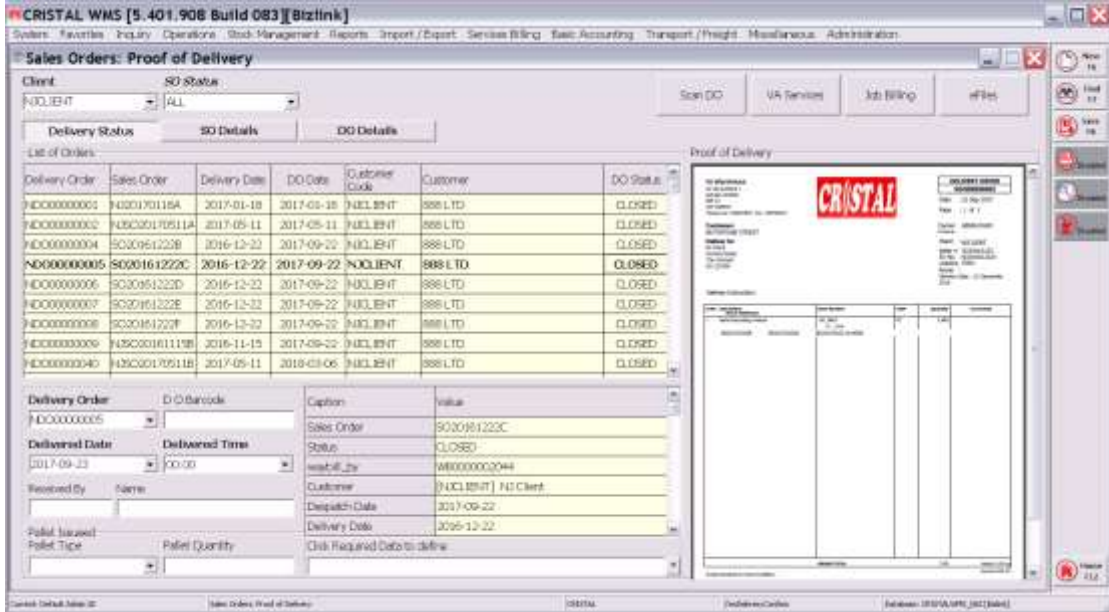
1.2. Proof of Delivery

Delivery Order and Transport Orders Confirmation are rename as Sales Orders: Proof of Delivery and Transport Orders: Proof of Delivery.

Enhancement is designed to facilitate site to develop their own POF apps. A set of web services APIs will be made available in the near future. Please discuss with vendor / consultants.

The function automates the display of the proof of delivery digital documents, if available. This is subjected that the digital document is named as 'POD' place the delivery order number in PDF format.

The digital document is to be saved in the folder as defined in Administration | System Configuration | Directory: Proof of Delivery

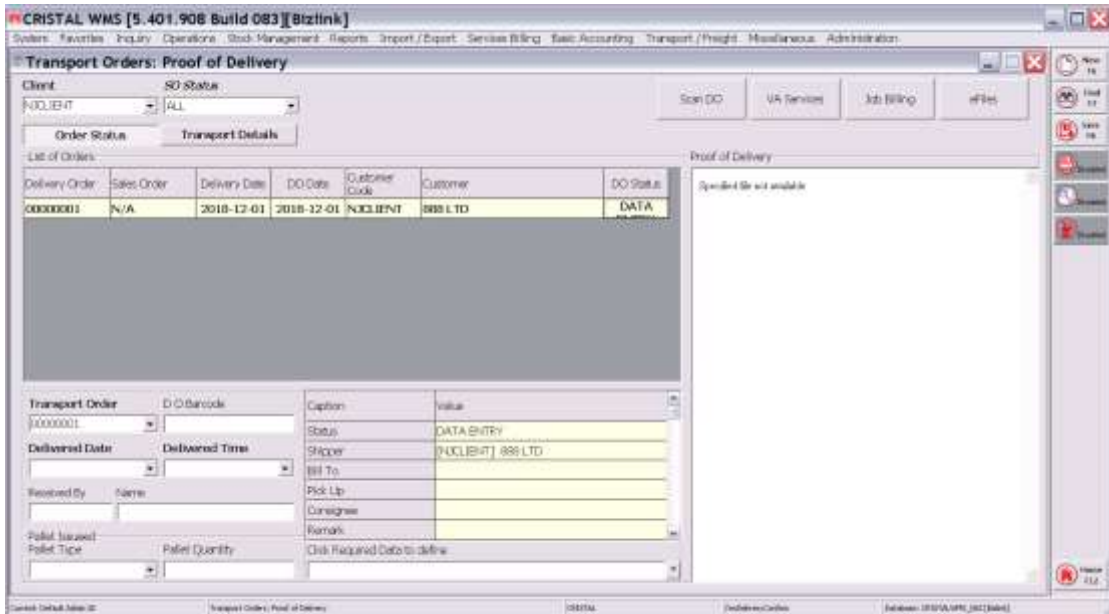


Change is also made to display date in grid box instead of textboxes to facilitate future enhancement.

Note data in the grid box only allow amendment to dates. Other data are read only.

Others functions remain unchanged.

The Transport Orders: Proof of Delivery is as below



1.3. Licensing Control

Enhancement of licensing control for Subscription and Demo sites to block set up of Site-Specific reports. This is extension of disallow of deployment of third party enhancement to CRiSTAL WMS to ensure other sites sharing the same database server di not face with performance.

In addition, this is also for security control purposes.

This control do not affect in-premise deployment as change made by party other than CRiSTAL, the party is responsible to the site management. CRiSTAL will not be not responsible in instance when non-CRiSTAL enhancements / changes have been deployed.

1.4. Fix Length Product ID

Function is incorporated to enable users to set fix length Product ID with the objective to minimise data entry error. This is a Client level setting – Client Profiles | UDFs | Miscellaneous | Product ID: Fixed Length (Characters).

1.5. Sales Orders Entry | Instructions

UI change to display instructions in grid box instead of the original textboxes:

Warehouse	Transport	Billing
Instructions	Operations	Delivery
Operations	Freight	UDFs
All		
Caption	Wike	
Picking Instruction	Picking	
Packing Instruction	Packing	
Delivery Instruction	Delivery	
Remarks	Remarks	
Customs VAT ID		
Customs Text 1		
Customs Text 2		
UEP ID (Max Length: 255)		

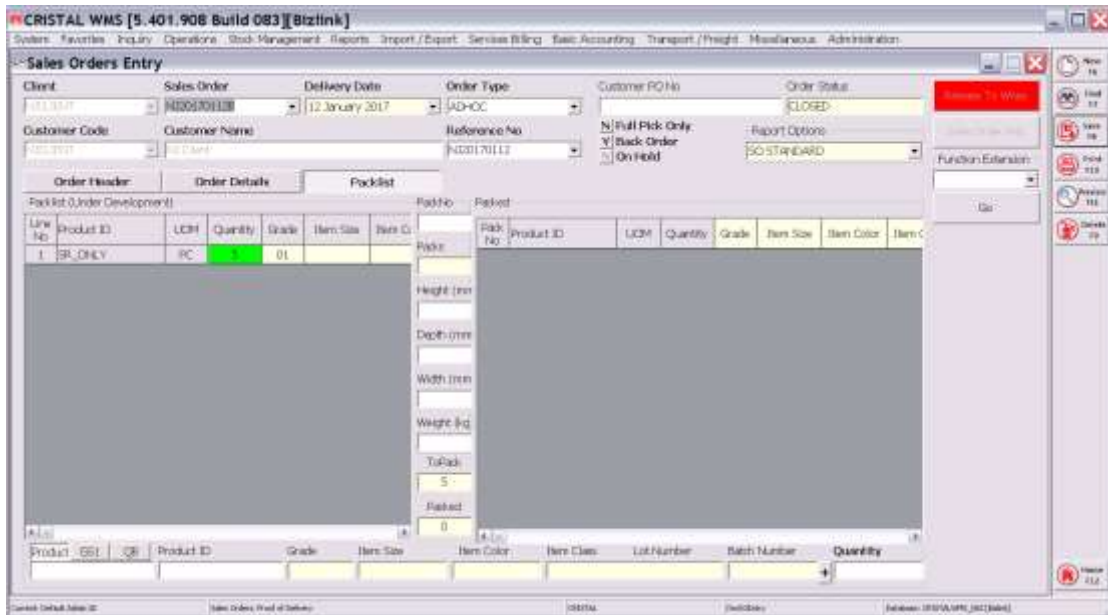
2. BUILD 5.401.908.080/1 ENHANCEMENT

Following enhancement are incorporated in this build:

2.1. Sales Orders Packing

Sales Orders Entry is enhanced to incorporate Packing function. This is based on Packing Carton Item which is renamed as Shipment Packing: Carton Item.

The function is restricted to 1 level packing – be it pallet or carton. Basically identified as Pack.

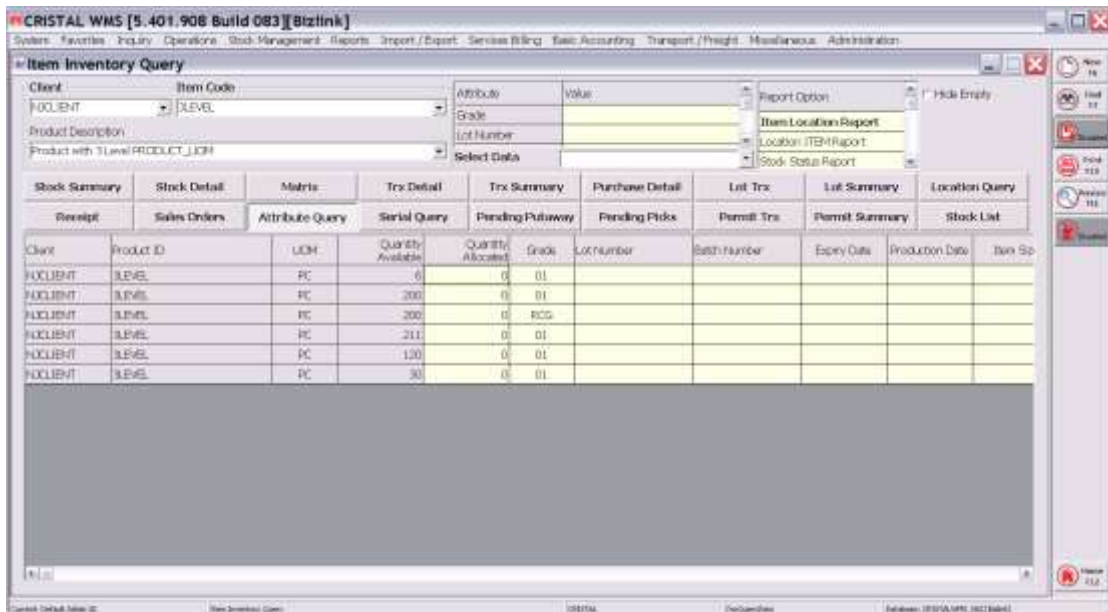


Only Sales Orders that is Picks Confirmed can be packed.

Another limitation is the Sales Orders is of 1 delivery order only.

2.2. Item Inventory Query

The Attributes section is redesigned to use grid box instead of textboxes. This allows a single page listing of the attributes. It also enable the display of reports options on the 'same page'



3. BUILD 5.401.908.079 ENHANCEMENT

Following enhancement are incorporated in this build:

3.1. Transaction Codes Definition

Simplify the definition of transaction codes – allows same codes to be used as AR and AP codes.

